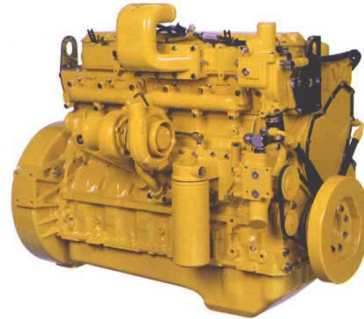


INTERNATIONAL® VT 365

vs. Caterpillar® 3126E/C7



International VT 365



Caterpillar 3126E/C7

The International® VT 365 is designed and built to deliver outstanding performance.

Improved power train performance - performance you can feel. State of the art advanced turbocharger design delivers improved acceleration, driveability and aggressive low end torque.

Improved reliability performance for increased uptime, and lower operating costs. A rigid cast iron bedplate, rear geartrain design and externally accessible glow plug design add to the International VT 365 reliability and durability, and serviceability.

Improved performance, and ease of maintenance and service are hallmarks. No valve lash adjustment is ever necessary with hydraulic roller followers. Cartridge style fuel and oil filters are both accessible from the top of the engine.

International VT 365 Bus Value Advantages

- Heater Performance
- Quiet Operation
- Fuel Economy
- Responsive Acceleration-Engine/ Intuitive Shift

INTERNATIONAL® VT 365 Increased Uptime (Maintainability / Serviceability)

vs. Caterpillar® 3126E/C7

Preventive maintenance cost (based on first 100,000 miles [160,934km])



International VT 365

The International® VT 365 requires an oil and filter change at 10,000 miles with the standard 20 quart pan, a fuel filter change every 20,000 miles, and a coolant change at 300,000 miles. No valve lash adjustment is ever needed with hydraulic roller followers. Normal maintenance is \$1136.10



Caterpillar 3126E/C7

The Caterpillar® 3126E requires an oil and filter change at 15,000 miles, a fuel filter change 15,000 miles, valve lash adjustment at 100,000 miles and a coolant change 600,000 miles. Normal maintenance during the first 100,000 miles is \$1,244.86 for the 30qt.oil pan.

Value

International has eliminated, extended and synchronized service intervals to reduce labor and parts cost on major preventative maintenance items. Preventative maintenance is around \$108 less than the competitive chassis powered by the CAT 3126E/C7.

Cold Starting



International VT 365

Proven electronically controlled glow plugs provide standard cold start capability to -20° F unaided. With block heater, starts in 5 seconds at -20° F. Glow plugs heat the air directly in the cylinder where it is most effective.



Caterpillar 3126E/C7

Caterpillar has a standard intake air heater used for cold starts in temperatures down to 0° F. Below this temperature, Caterpillar recommends using an additional block heater and an ether starting system.

Value

International's proven glow plug system reduces the risk of "no-start" in cold weather, and offers easy service. Buses with less reliable engine performance in cold weather may result in jeopardizing those critical school schedules and in unexpected costs.

INTERNATIONAL® VT 365 Increased Uptime (Durability)

vs. Caterpillar® 3126E/C7

Fuel Filter



International VT 365

High value International® fuel filter is top mounted for easy service and includes standard heater and water-in-fuel indicator for complete all weather operation. International's system reduces the risk of fuel gelling in cold weather, mitigates fuel quality issues (water in fuel) and offers easy service.



Caterpillar 3126E/C7

The Caterpillar 3126E® has a side mount spin on filter with no water in fuel indicator. This approach is less capable of preventing gelled fuel filters. A gelled fuel filter can stop a bus. This downtime could cost money and prevent children from getting to school.

Value

International's system reduces the risk of fuel gelling in cold weather, mitigates fuel quality issues (water in fuel) and offers easy service. A gelled fuel filter can stop the bus, and may result in jeopardizing those critical school schedules and unexpected service costs.

Main Bearings



International VT 365

Modern bed-plate design captures all 5 main bearing caps into one rigid casting that's a hefty 40+ lbs. This keeps all 4-bolt caps on perfect alignment and provides added strength to the crankcase.



Caterpillar 3126E/C7

The Caterpillar structure uses conventional individual main bearing cap design.

Value

Modern design provides increased durability and noise reduction.

INTERNATIONAL® VT 365 Increased Uptime (Reliability / Durability)

vs. Caterpillar® 3126E/C7

Value

After looking at the photos and reading the description of premium International® VT 365 features, we think you'll know why it could be expected to provide superior features and service to the Caterpillar® 3126E. International's Vee family of engines is built on a proven platform and a long, successful history.



International VT 365

B10 life for the VT365 is 250,000 miles (90% of engines still running) with B50 life at 350,000 miles (50% of engines still running)* under normal operating conditions. International has a long successful history with diesel engines in medium trucks.



Caterpillar 3126E/C7

Caterpillar claims a B50 life between 300,000 and 500,000 miles. Based on the 3126E parent bore architecture, it has no features to suggest it will measure up to the International VT 365.

* without a repair requiring the removal of a cylinder head or oil pan

International VT 365 Bus Value Advantages

- Heater Performance
- Quiet Operation
- Fuel Economy
- Responsive Acceleration-Engine/ Intuitive Shift

INTERNATIONAL® VT 365 Performance

vs. Caterpillar® 3126E/C7



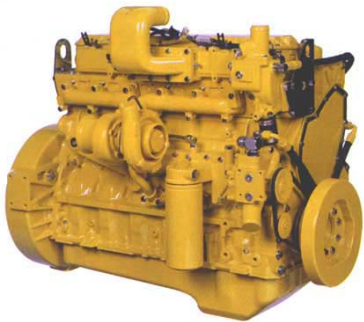
International VT 365

International VT 365

Rated HP @ RPM
 175 HP @ 2600 RPM
 200 HP @ 2600 RPM
 215 HP @ 2600 RPM

Rated Peak Torque @ RPM
 460 lb-ft @ 1400 RPM
 520 lb-ft @ 1400 RPM
 540 lb-ft @ 1400 RPM

Models
 CE
 CE, RE
 CE, RE



Caterpillar 3126E

Caterpillar 3126E/C7

Rated / Peak HP @ RPM
 190 / 207 HP @ 2200 RPM
 210 / 210 HP @ 2400 RPM
 210 / 210 HP @ 2200 RPM
 230 / 230 HP @ 2200 RPM
 250 / 250 HP @ 2200 RPM
 250 / 250 HP @ 2200 RPM
 275 / 275 HP @ 2200 RPM
 300 / 300 HP @ 2200 RPM
 300 / 300 HP @ 2200 RPM
 330 / 330 HP @ 2200 RPM

Rated Peak Torque @ RPM
 520 lb-ft @ 1440 RPM
 520 lb-ft @ 1440 RPM
 605 lb-ft @ 1440 RPM
 660 lb-ft @ 1440 RPM
 660 lb-ft @ 1440 RPM
 800 lb-ft @ 1440 RPM
 860 lb-ft @ 1440 RPM
 800 lb-ft @ 1440 RPM
 860 lb-ft @ 1440 RPM
 860 lb-ft @ 1440 RPM

Specifications, descriptions, and illustrative material for International and competitive models are as accurate as known at time of publication, but are subject to change without notice. Split-Shot, Diamond Logic, and Works are trademarks of International Truck and Engine Corporation. International, EZ-Tech and the International Diamond logo are registered trademarks of International Truck and Engine Corporation.